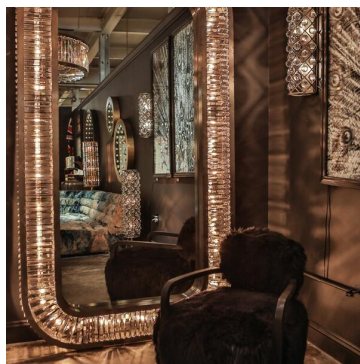




TIMOTHY OULTON



REX TALL MIRROR

Floor Mirrors

Swirl your senses with the show-stopping Rex collection. Strongly directed by Art Deco influences, Rex recaptures the magic and romance of glamour's golden age. The collection is inspired by the historic Rex cinema in England; a 1930s Art Deco gem boasting a beautiful auditorium with dramatic lighting. Saved from dereliction by a local entrepreneur, the cinema was restored to its former glory in 2004. The Rex tall mirror juxtaposes its raw iron frame with glowing prisms of optical grade glass, refracting the light in a perpetual dance of shimmer and sparkle. 361 prisms are assembled by hand on the 2.4m high mirror. Vintage glamour, recast for today.

SPECIFICATION

Product Code:	T-REX-LF-0002-U
Product Height:	242cm / 95"
Product Width:	137cm / 54"
Product Depth:	15.5cm / 6"
Weight:	165kg / 364lbs